



AUTOSIMPLY

Manufacturing Order

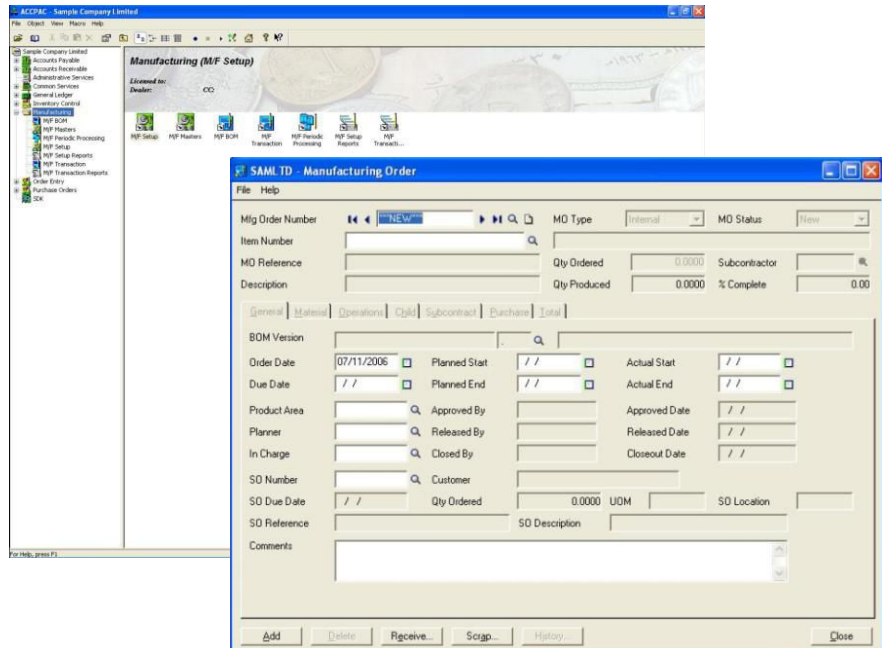
About AutoSimply

AutoSimply is a Sage Developer Partner since 2004. Founded by a group of ACCPAC consultants with over 10 years project experience, we know and understand fully what our customers really need. Our products are developed according to Sage ACCPAC SDK and built on world-class architecture. AutoSimply's Manufacturing Order, is a compact, user-oriented manufacturing processing solution that is integrated with Sage ACCPAC ERP. ACCPAC service providers and their customers will find our solution easy to deploy and use.

Visit us at www.indosage.com or call 021-766 0349 today for more information about our Inventory Planning (I/P) module.

PT. Microtek Informa Solusindo

GENERAL LEDGER
ACCOUNTS RECEIVABLE
ACCOUNTS PAYABLE
INVENTORY CONTROL
SALES ANALYSIS
ORDER ENTRY
PRODUCTION
CASH/BOOK
MIS
ACCPAC Plus



AutoSimply's Manufacturing Order is an easy-to-use manufacturing solution for small to medium-sized enterprises. Using ACCPAC SDK, its design is fully integrated with Sage ACCPAC Finance and Logistics modules. Simple yet powerful, AutoSimply enables an efficient manufacturing operation flow covering material purchase, processing manufacturing orders, work in progress, routing cost calculation, material consumption, material scrap and item substitution and order closeout. The design of AutoSimply's Manufacturing Order is conceptualized to fully accommodate users' business processes needs and expectations.

Features

Multi-level Bill of Materials

- § Supports multi-level Bill of Materials (BOM) structure.
- § Unlimited number of BOM codes and revision numbers per item code.
- § BOM based on standard formulation quantity for each product.
- § Define scrap factors/production allowances for each component in the BOM.
- § Archive Engineering Change Notice (ECN) information for each BOM structure.
- § Use the different BOM status to manage items structure information.

Manufacturing Order Processing

- § Plan, schedule, release and track manufacturing orders (MO) to better manage the production floor.
- § Link MO with outstanding child or subcontract MO's.
- § Link MO with open sales orders (ACCPAC OE) and purchase orders (ACCPAC PO).



AutoSimply

Manufacturing Order

- § Perform full and partial material issuances.
- § Record production scrap and return of materials from the shop floor.
- § Perform full and partial product receipts.
- § Close out manufacturing orders (MO) and calculate actual costs and production variances.

Online Average Costing

- § Cost of production is calculated at the point of posting.
- § Material issuance cost is based on actual ACCPAC IC inventory issuance cost.
- § Finished good production cost is calculated as the sum of actual material issuance cost plus applied resource and tools cost divided by actual produced quantity.
- § In order to accommodate partial manufacturing receipts, output is cost initially based on standard costs but is recomputed to actual upon MO closeout.

Operation-based Manufacturing

- § Production floor is divided into work centers which are in turn accessed through production routing operations.
- § Material components in a BOM is assigned to a distinct operation in the bill of manufacturing.
- § Perform material issuances or returns by operation instead of just by MO.
- § Perform production scrap by operation.
- § Perform WIP allocation by operation.
- § Perform material receipts by operation instead of just by MO.

Operation-based Standard Costing

- § Production costs are classified as material costs, overhead costs, labor costs and tool costs.
- § Material costs are further categorized as either direct or packaging.
- § Material (direct and packaging) standard costs are derived from ACCPAC IC standard costs.
- § Overhead costs can be fixed or variable.
- § Labor costs are composed of setup labor and direct or run-time labor costs.
- § Resources and tools can be applied to work centers for costing purposes.
- § Assembled standard costs derived from the BOM can be exported to ACCPAC Standard Costs.

Work in Process (WIP) Monitoring

- § Materials issued from ACCPAC to an open Manufacturing Order (MO) is considered WIP
- § Manufacturing Orders may be grouped into Production areas/zones for purposes of tracking and management
- § WIP is consumed via the MO allocation transaction
- § MO closeout automatically allocates unconsumed WIP
- § Users have the option to keep track of WIP in the shop floor and generate current or historic WIP reports.

Component Substitution

- § Provides for multiple component substitutes rated according to preference
- § Allows user triggered component substitution during MO Issuance based on inventory availability

Tools Monitoring and Costing

- § Tools are assets which are consumed during the manufacturing process
- § Consumption of tools may be fixed or variable
- § Tools can be categorized to user-defined tool types with pre-defined standard costs
- § The Tool Master allows the maintenance of actual tools with beginning quantities and actual costs.
- § These tools are applied to MO's and contribute to the actual product cost posted to ACCPAC IC.

Reporting

- § Item History Report
- § Manufacturing Order (MO) History Report
- § Manufacturing Order (MO) Status Report
- § Production Variance Report
- § Material Usage Report
- § Production Output Report